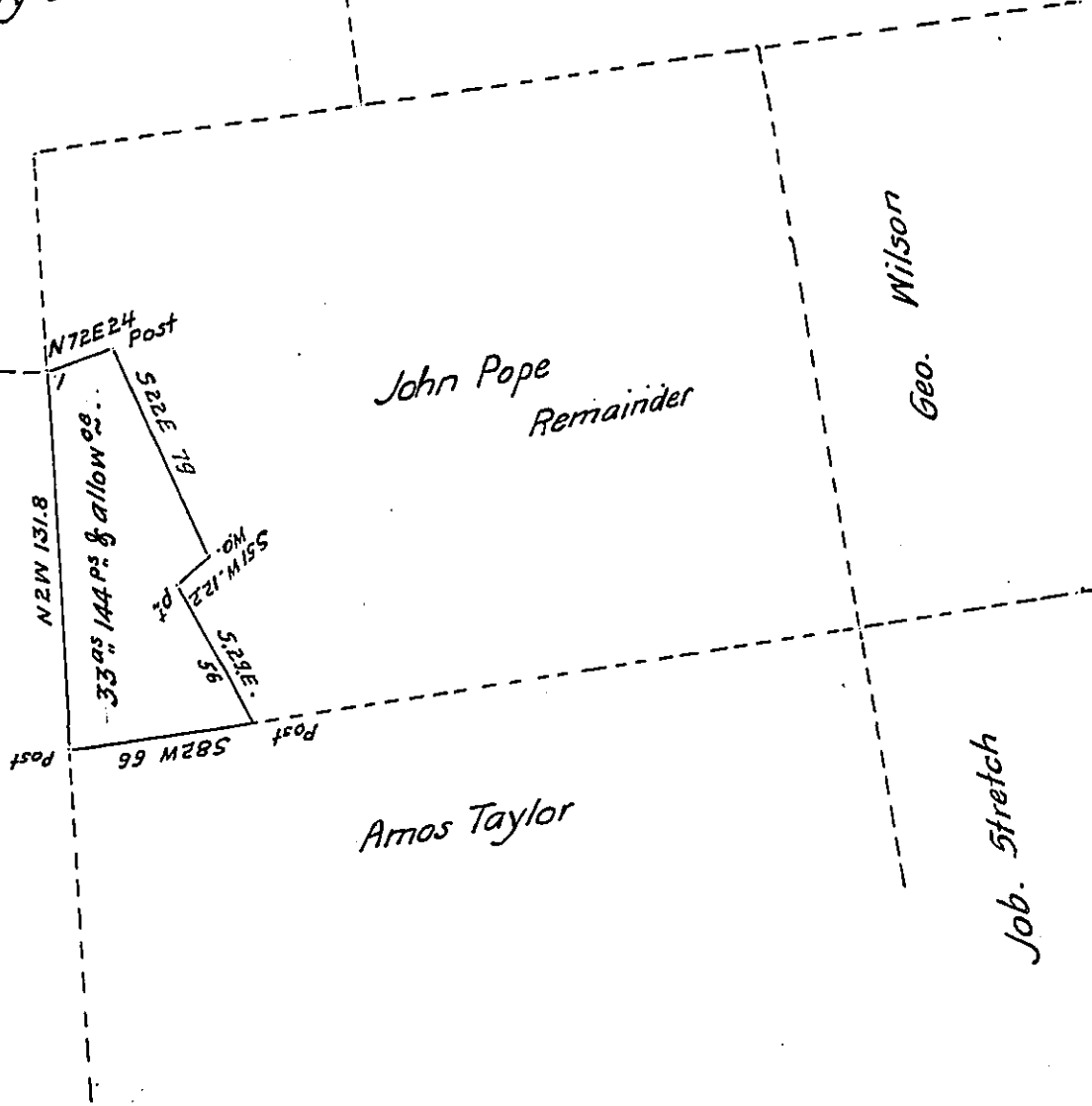


B-20-197  
Emanuel Josiah

Mary Stevenson

Benj<sup>n</sup>. Bonsall.

Dan<sup>l</sup>. Fahnestock. other Land



The above small tract contains thirty three Acres. and one hundred forty four perches and allowance, part of a larger tract in Juniatta township (formerly Rye) Surveyed in pursuance of an Application dated 18<sup>th</sup> Dec<sup>r</sup>. 1766. N<sup>o</sup>. 2202 entered by John Pope Con. 324<sup>acs</sup>. The said part Surveyd to Dan<sup>l</sup>. Fahnestock the 4 August A.D<sup>o</sup> 1823 P<sup>r</sup>.

G. Monroe D.S.

Perry Co.

To Sam<sup>l</sup>. Cochran Esquire  
 Surveyor Gen<sup>l</sup>.  
 (Penn<sup>a</sup>)

IN TESTIMONY that the above is a copy of the original remaining on file in the Department of Internal Affairs of Pennsylvania, made conformably to an Act of Assembly approved the 16th day of February, 1833, I have hereunto set my Hand and caused the Seal of said Department to be affixed at Harrisburg, this seventeenth day of July 1908

*Henry Howard*  
 Secretary of Internal Affairs.